

Dear Visual MODFLOW User,

Waterloo Hydrogeologic is pleased to announce the official release of [HydroGeo Analyst](#) - the first truly **ALL-IN-ONE** groundwater and borehole data management system for groundwater modeling professionals! HydroGeo Analyst offers the ultimate combination of tools and capabilities to assist you with your Visual MODFLOW modeling projects.

HydroGeo Analyst combines a powerful suite of analysis and mapping tools that will help you to...

- ▶ **Analyze & Develop Your Conceptual Groundwater System**
- ▶ **Manage & Maintain Consistency of Model Input Data for Each Project** (Units, Projections, etc.)
- ▶ **Produce Basemaps for Use in Visual MODFLOW** (Raster, CAD, ESRI™ Shape)
- ▶ **Query & Review Analytical Lab Data or Hydrogeologic Data** (QA/QC)
- ▶ **Interpret & Create Model Layers Directly From Your Borehole Data** - A MAJOR TIME SAVER!
- ▶ **Digitized Model Properties** (Streams, Recharge Zones, Initial Concentrations, Head Elevations, etc.)
- ▶ **Visualize Model Results in HydroGeo Analyst's GIS Map Manager** (Concentration Contours, etc.)

Imagine being able to prepare and manage all your Visual MODFLOW input data within one easy-to-use, affordable program.

HydroGeo Analyst is a perfect companion product to Visual MODFLOW Pro and acts as a powerful "Conceptual Model Builder"!

How HydroGeo Analyst & Visual MODFLOW Work Together - The Perfect Combination!

Analyze & Develop the Conceptual Groundwater System Directly Within HydroGeo Analyst

The initial step to any groundwater modeling project typically involves collecting data and defining the conceptual setting of the site. HydroGeo Analyst combines an innovative suite of software tools to help you assess the overall conceptual model environment - all within one software package!

HydroGeo Analyst is ideally suited for:

- ▶ Defining the 3D Geologic Architecture
- ▶ Producing Fence Diagrams & Cross-Sections
- ▶ Mapping Hydrostratigraphic Distributions
- ▶ Mapping Aquifers & Aquitards
- ▶ Contouring Potentiometric Surfaces
- ▶ Mapping Recharge & Discharge Zones

- ▶ Querying & Comparing Various Data
- ▶ Identifying Active or Decommissioned Wells
- ▶ Producing Contaminant Source Inventories
- ▶ Assessing Aquifer Vulnerability

HydroGeo Analyst provides a completely interactive environment to help you prepare you data for your Visual MODFLOW projects.

Maintain Unit & Coordinate System Consistency

Maintaining unit/coordinate sytem consistency may present a major challenge for modeling professionals. Whether dealing with measured chemistry data, or global positioning systems, HydroGeo Analyst's Data Transfer System (DTS) conducts on-the-fly, global unit/coordinate conversions during data entry, or data exporting. Access your data in a fast and consistent manner!

HydroGeo Analyst Benefits:

- ▶ Easy Sharing of Data with Other Programs
- ▶ Includes Automatic Conversions (unit, coordinate)
- ▶ Unit Conversions Are Applied Globally
- ▶ Export Datum into a Variety of Units or Coordinates

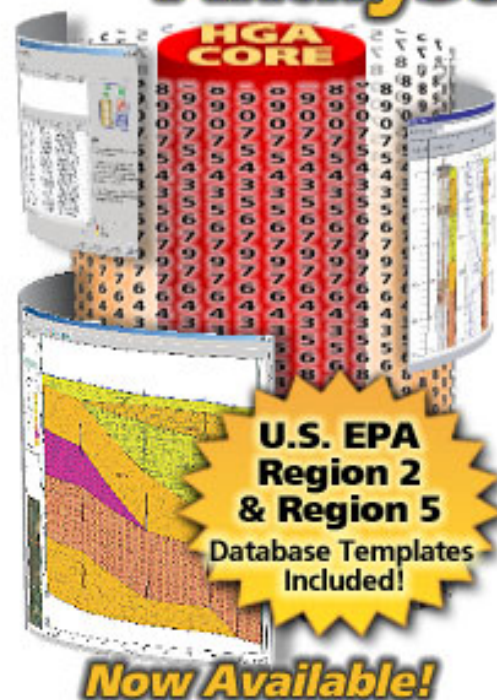
Produce Basemaps for Use in Visual MODFLOW

Visual MODFLOW users import basemaps to act as a kind of blueprint when assigning various model input (boundaries, wells, recharge areas, etc.). Basemaps are available in Raster, CAD, or ESRI™ Shape File Formats and are all supported in HydroGeo Analyst's GIS Map Manager.

HydroGeo Analyst Benefits:

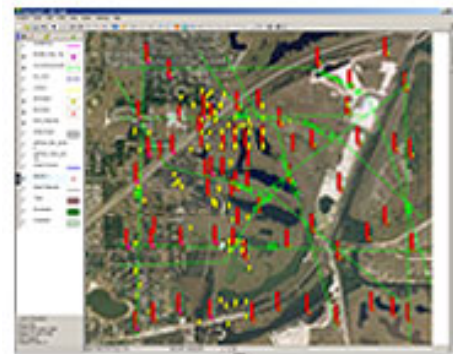
- ▶ Import Virtually Any Base Map Format
- ▶ On-The-Fly Geo-Referencing of Raster Images
- ▶ Produce Maps & Export into Virtually Any Format
- ▶ Develop Basemaps Depicting A Multitude of Information Including Risk Mapping

HydroGeo Analyst

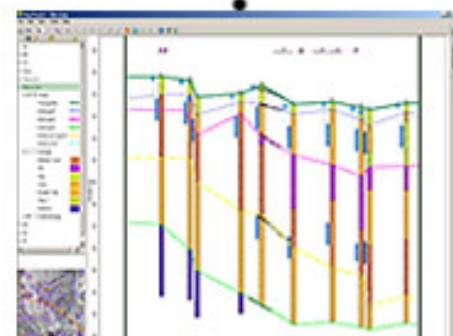


Download a free demo today! [Click here](#)

Download the [HydroGeo Analyst Brochure](#)



Define Cross-Section Lines



Query & Review Analytical Lab Data or Hydrogeologic Data

Prior to building the numeric flow model, Visual MODFLOW modelers typically run through a data check to ensure the quality of the data is representative and true to the site. As a complete data management tool, HydroGeo Analyst provides practical search/query capabilities combined with 2D/3D visualization tools to help you assess the quality of your data.

HydroGeo Analyst Benefits:

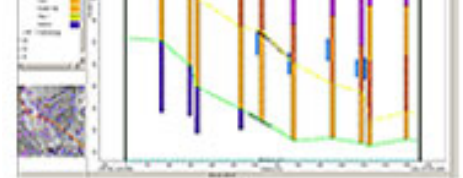
- ▶ Import Analytical Lab Results (EDD's)
- ▶ Seamless Data Validation & Error Checking During Import
- ▶ Report & Map Data Queries in the GIS Map Manager
- ▶ Determine Discrepancies in Borehole Reports

Interpret & Create Model Layers Directly From Your Borehole Data for Use In Visual MODFLOW

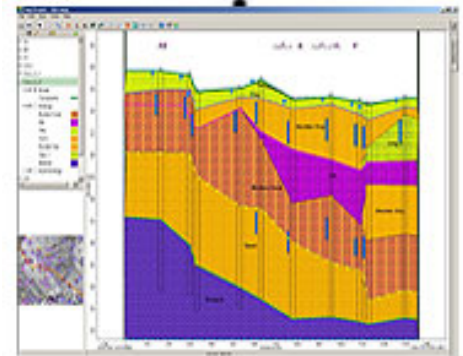
Developing model layers from actual borehole data requires an in-depth understanding of your geologic conditions. Often, the task of interpreting cross-section data and assigning model layers for use in groundwater flow models is a time-consuming process. With the introduction of HydroGeo Analyst, you can develop your model layers efficiently, directly from your borehole data - and import them for use in Visual MODFLOW!

The Workflow Process - It's Easy with HydroGeo Analyst!

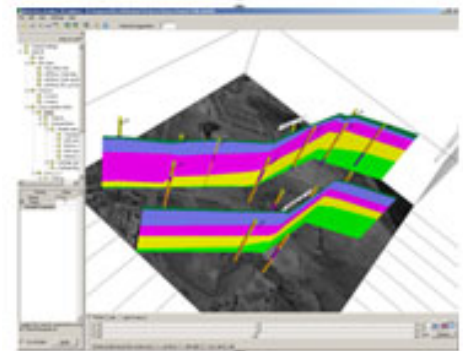
- ▶ Define one or multiple cross-section lines on your map using the built-in GIS Map Manager
- ▶ Launch the Cross-Section Editor and begin assigning polygons to represent geologic units with property fills
- ▶ Select appropriate hydrogeologic groups to represent each layer of the model and graphically assign the bottom of layers using the 'Assign Layer Tool'
- ▶ Export all defined layers for use in Visual MODFLOW
- ▶ Import interpreted model layers into Visual MODFLOW



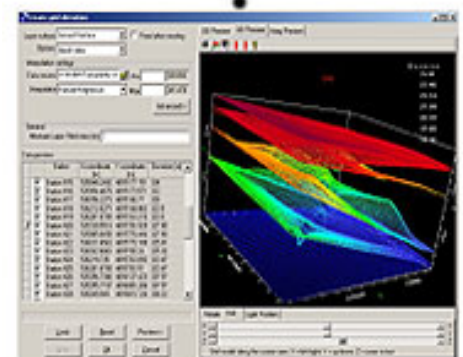
Interpret Borehole Data



Define Model Layers



Export Interpreted Layers To Visual MODFLOW



Interpolate & Import 3D Layers



Digitized Model Properties

HydroGeo Analyst's GIS Map Manager offers many possibilities to the groundwater modeler including the ability to digitize and create ESRI™ Polygon Shape files. Each layer can be exported to Visual MODFLOW as a point of reference. This includes:

- ▶ Digitizing Recharge Zones As Input For Visual MODFLOW
- ▶ Digitize Physical Features Relevant to Model (property lines, streets, landuse maps, ecologically sensitive areas, etc.)

Visualize Model Results in HydroGeo Analyst's GIS Map Manager

HydroGeo Analyst also allows you to import various model output data and integrate it with the HydroGeo Analyst project. Simply import your model results into HydroGeo Analyst and automatically generate your model report directly from HydroGeo Analyst!

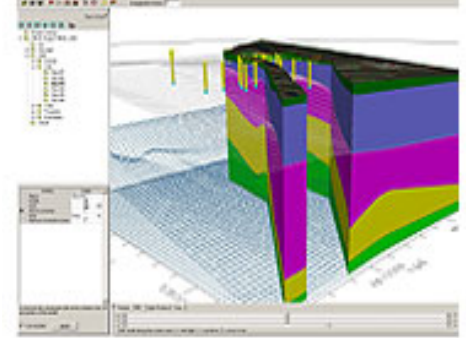
- ▶ Export Concentration Contours to the GIS Map Manager
- ▶ Export Water Table Contours to the GIS Map Manager
- ▶ Export Optimized Pumping Schedules, plus much more!

As an all-in-one software package, HydroGeo Analyst will help you achieve a new level in modeling efficiency!

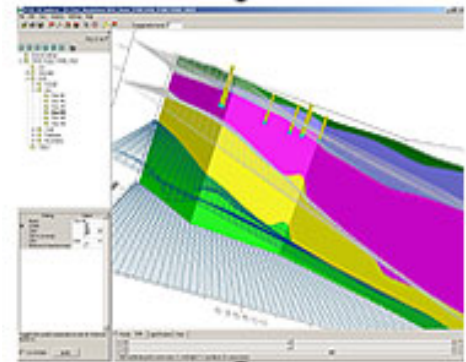
Introductory Offer
\$2995
Single User License

Download a free demo today! [Click here.](#)

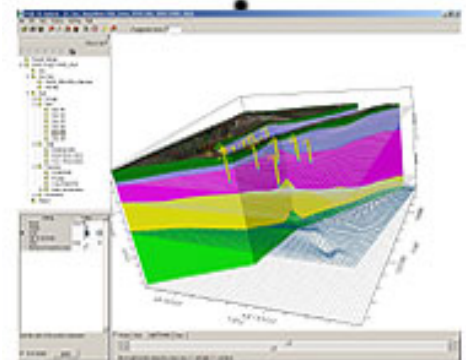
Download the [HydroGeo Analyst Brochure!](#)



Assign Layer Properties!



3D Visualization



3D Animations

ORDER NOW

Call (519) 746-1798 and Order Today!

Website: www.waterloohydrogeologic.com

Email: sales@waterloohydrogeologic.com

Phone: (519) 746-1798



Introducing The Complete Groundwater
& Borehole Data Management &
Visualization Solution!

HydroGeo Analyst v.1.0

Buy now

[▲ TOP](#)

Thank you for reading this month's edition of WHI E-News! For more information about our products and services please use the links below!

[Visit our Website](#) - See what Waterloo Hydrogeologic Inc. has to offer!

[Software Division](#) - Check out our groundwater modeling software.

[Consulting Division](#) - Visit our Consulting Division on the web to see how we can help you.

[Training Division](#) - Visit our Training Division on the web to find a course in your area.

[Equipment Division](#) - WHI is now selling groundwater monitoring equipment.

The preceding message was sent to you as a service by Waterloo Hydrogeologic, Inc. If you do not wish to receive future editions of WHI E-News, please reply to this message with the word 'Remove' in the subject line - please DO NOT delete the line ID number below.



Waterloo Hydrogeologic, Inc.

Website: www.waterloohydrogeologic.com

Email: info@waterloohydrogeologic.com

Phone: 519-746-1798 Fax: 519-885-5262

Copyright© 2004 Waterloo Hydrogeologic, Inc. All Rights Reserved.