

Hydro GeoAnalyst 10.0

Environmental Data Management, Analysis and Visualization Software

Hydro GeoAnalyst (HGA) is our premium groundwater and environmental data management system. HGA organizes environmental data into a single repository with tools that enable users to quickly create reliable, analytical results that are comprehensive and easy to understand.

HGA is a powerful tool for environmental and geoscience professionals working in mining, oil & gas, environmental services, and related governmental agencies. HGA enables teams to organize and analyze large volumes of data in an effective and efficient way to make informed decisions about environment and water resources management.

HGA Improvements

Version 10 of HGA, includes the following improvements:



User Manager Module

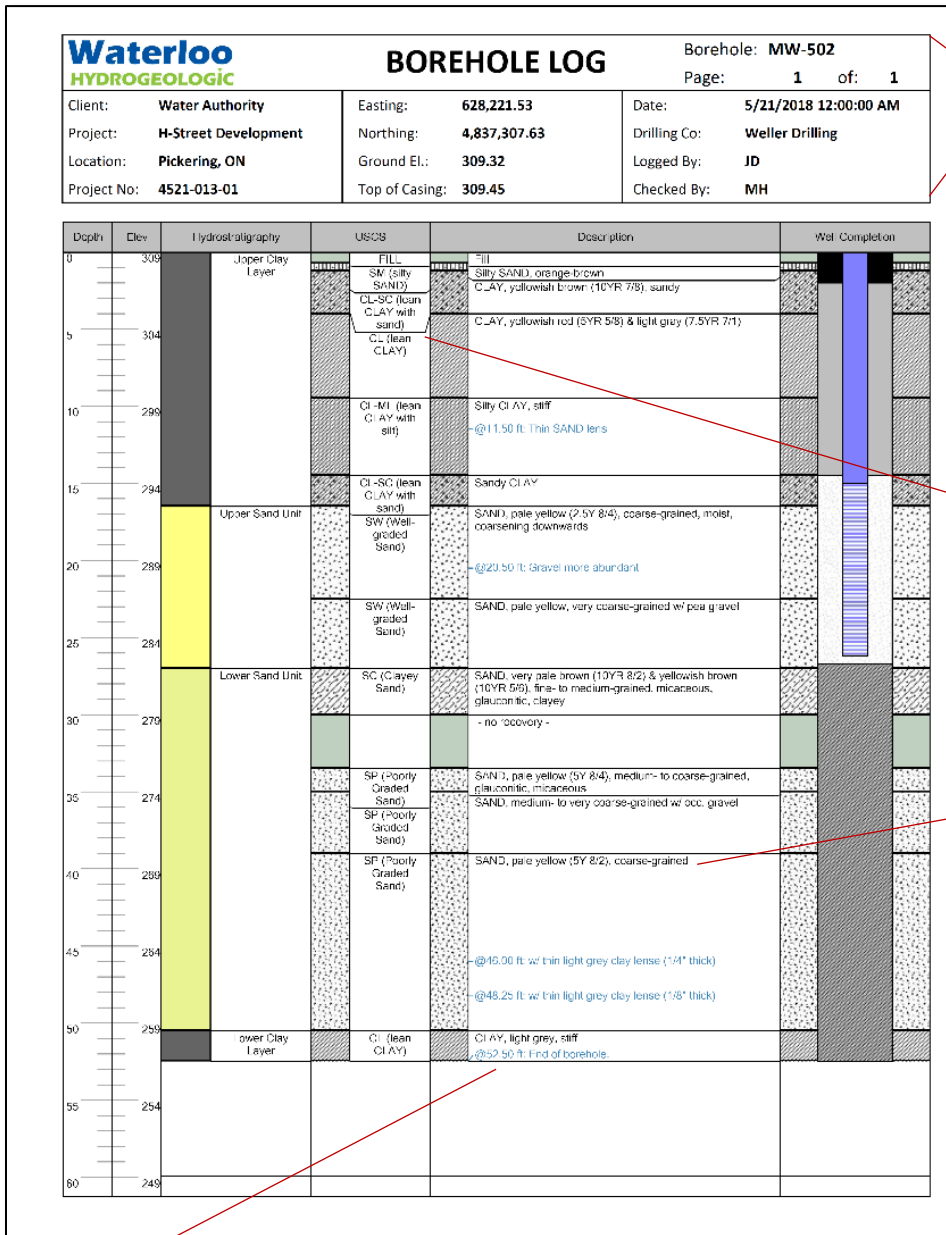
The User Manager Module includes improvements that allow you to add refine user-permission levels and increase security on your information.

- **Permissions-Based users:** users can now be granted one or more user permission levels instead of hard-coded permissions providing more flexibility for user abilities without compromising security.
- **New User Type:** Template Access user type allows users to make changes to the template without requiring full access to the database and SQL Server.

Station list Station data Query results Data filter User manager X					
Name	Server login	Read access	Edit access	Template access	Full access
dbo	DOMAIN\user	✓	✓	✓	✓
ReadUser		✓	✗	✗	✗
WriteUser		✓	✓	✗	✗
TemplateUser		✓	✓	✓	✗
AdminUser		✓	✓	✓	✓

Well Profile Module

The Well Profile Modules includes improvements that further automate production of professional quality, print-ready borehole logs and well completion detail reports:



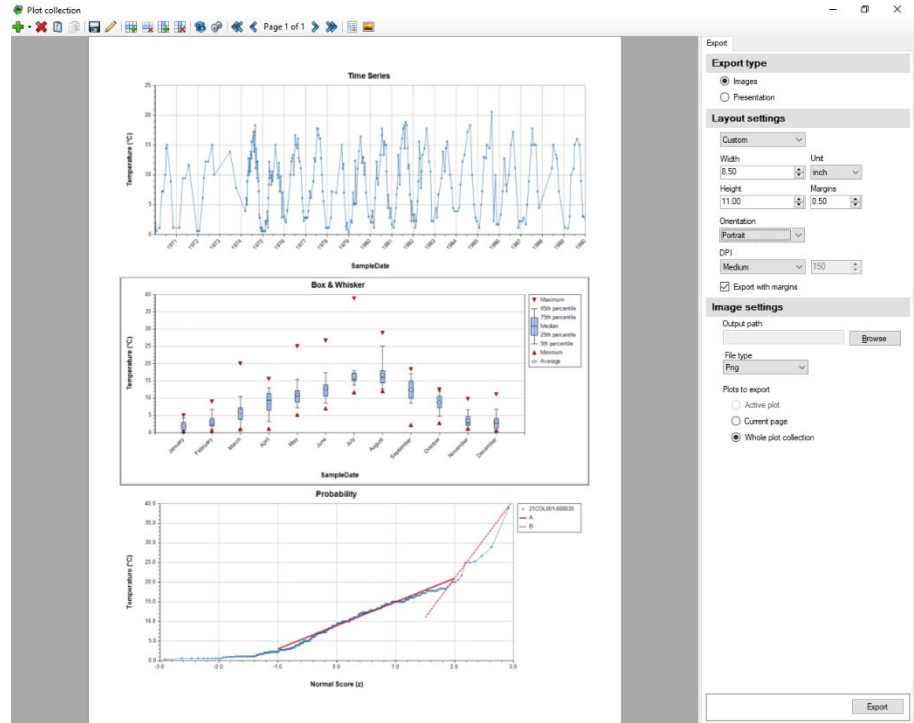
- Add fields from a query to Templates:** link fields from a query to a well profile template so that you can generate automated header information for print-ready Borehole Logs and other well profile documents.
- Improved Dynamic Label Heights for Short Intervals:** lithology and interval column entries dynamically stretch to fit their text
- In-line depth-specific annotations:** add in-line depth-specific comments within a lithology or interval columns of a well profile. Comments will be placed at the specified depth with leader lines.
- Well Termination Statements:** lithology and interval column entries can include an automatically generated well-termination statement.



Plot Collections

Improvements to the plot collection module improve your ability to create print-ready plots rapidly and consistently:

- Print-preview layout view allows you to see how the images will look when exported
- Rectangular plots (e.g. Box and Whisker, Detection Summary, Histogram, Probability Plot, Time series, etc.) can be optionally stretched to fill their cell in the plot collection layout.
- Custom line add-ins support x-value cutoffs so you can plot line segments
- Axis labels on rectangular plots can be rotated



Enhanced Usability

- **International date handling:** HGA supports international date formats throughout HGA, including data import, plumes, Quick Checker, Data Import, and Mobile EDD
- **String Data Type:** string data fields can now be specified with any length.

HGA+ Improvements

Hydro GeoAnalyst Plus (HGA+) is an extended edition of HGA that includes an integrated, powerful tool set to plot, analyze, and report on water quality and geochemical data. HGA+ combines the new geochemical analysis features available in AquaChem 10. Version 10 of HGA+ includes all the improvements listed above, plus the following:



Map Viewer Module

HGA+ includes an all-new Map Viewer Module that allows you to create maps based on a live connection to your data:

- Station groups and sample set data can be plotted using simple symbols, proportional/graduated symbols, category-based symbols, pie charts, radial plots, and Stiff diagrams.
- Aggregate co-located samples based on sample date or concentrations
- Supplement the map with imported shapefiles and basemap images



Plot Collections

Improvements to the plot collection module improve your ability to create print-ready plots rapidly and consistently:

- Custom plot lines can be dynamically linked to a water quality standard
- Improved performance for Plots built using calculated parameters
- The right and bottom plot panels in a Durov Plot can be scaled relative to the central plot



Enhanced Usability

- **Parameter Handling:** automatically add a list of parameters (before or during import) from the Chemical List and automatically delete parameters with no measurements in your project – this greatly improves automating parameter management.

Waterloo
HYDROGEOLOGIC

219 Labrador Drive, Suite 201
Waterloo, ON
N2K 4MB, Canada

sales@waterloohydrogeologic.com
www.waterloohydrogeologic.com